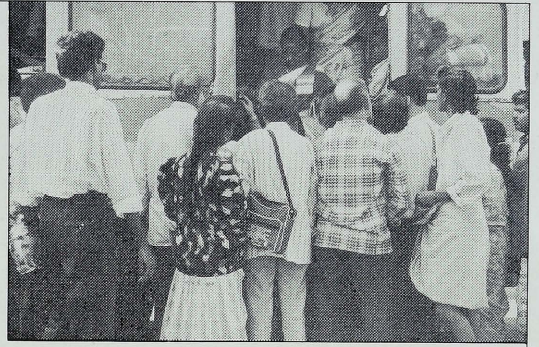


Tamil Arasu

SEPTEMBER 1999 Rs.5





**நமது அன்றாட
பழக்கவழக்கங்களால்,
எய்ட்ஸ் வராது.
அதற்கு நீங்களே
ஒரு உதாரணம்.**

காலையில் எழுந்தது முதல் ராத்திரி படுக்கப் போகும் வரை நீங்கள் எத்தனையோ பேரைச் சந்திக்கிறீர்கள். ஓட்டலுக்குச் செல்கிறீர்கள், சினிமா பார்க்கிறீர்கள், நெரிசலான பஸ்ஸில் பயணம் செய்கிறீர்கள், பலருடன் கை குலுக்குகிறீர்கள்.

இவர்களில் யாருக்காவது எச்ஐவி/ எய்ட்ஸ் பாதித்து இருக்கலாம்.

சாதாரண பழக்கவழக்கங்களின் மூலம் எய்ட்ஸ் பரவுவதாக இருந்தால், உங்களையும் எய்ட்ஸ் பாதித்திருக்க வேண்டும்.

ஆனால் அப்படி இல்லையே...

ஏனெனில், கை குலுக்குவதாலோ, உணவைப் பகிர்ந்து கொள்வதாலோ, தொடுவதாலோ, தும்மலினாலோ, கழிப்பிடத்தை அனைவரும் உபயோகிப்பதாலோ, எய்ட்ஸ் பரவுவதில்லை.

எனவே எய்ட்ஸ் பாதித்தவரைக் கண்டு நீங்கள் ஒதுங்க வேண்டியதில்லை. உங்களுக்கு எந்த ஆபத்தும் இல்லை.

அவர்களும் நம்மைப் போன்றவர்கள்தான். அவர்களுக்கு எப்பொழுதும் போல நாம் அன்பும், ஆதரவும் காட்டுவோம்.

**சிறிதளவு ஆதரவு பெருமளவு
சுமையைக் குறைக்கும்.**

**குழந்தை பிறப்பைத் தடுப்போம்
எய்ட்ஸ் வந்தோரைக் காப்போம்**



மேலும் விவரங்களுக்கு அணுக வேண்டிய முகவரி :
தமிழ்நாடு எய்ட்ஸ் கட்டுப்பாட்டு அமைப்பு
417, பாந்தியன் ரோடு, சென்னை - 600 008.
தொ.பே.: 8255467, 8255261, 8254917.
24 மணிநேர தொ.பே.: 8256882, 8256864.

TAMIL ARASU

Magazine of the Government of Tamil Nadu

THIRUVALLUVAR YEAR 2030

AAVANI - PURATTASI

SEPTEMBER - 1999

In this issue :

- ★ Golden Era of Rural Development.....2
- ★ State Bank of India and
Self Help Group concept in Tamil Nadu 16
- ★ Tackling the problems of power 18
- ★ Setting up of employment-cum-income
generating units for women (NORAD) 22
- ★ Decentralised District Planning -
Methodology and Scope 26
- ★ Anger - Most destructive force on Earth..... 28
- ★ Thirukkural -
The Code of Conduct for the Mankind..... 30
- ★ Naladiyar 32

WRAPPER - I

PERARIGNAR ANNA

WRAPPER - IV

Hon'ble Chief Minister Kalaignar M. Karunanidhi garlanding the
Statue of Arignar Anna on the occasion of Anna's 91st birth anniversary (15.9.1999)

The Government of Tamil Nadu accomplishes successfully various programmes to provide minimum level of basic services and amenities, to alleviate poverty through self employment programmes and to build up rural infrastructure like road, education facilities, healthcare, etc. Poverty can be alleviated only through self employment and wage employment. The Government with an aim of improving the lifestyle of the poor, offer grant loans with subsidy to develop their trade. The Rural Extension Training Centres also impart training to the rural unemployed youth on the trades which has potential for self employment. A rolling fund is provided to women group involved in profitable trade. Apart from these, modern tools are provided to rural craftsmen.

During the past three years Rs.601.87 crores with Government subsidy have been disbursed to 4,76,106 poor families living below the poverty line, to improve their trade and to economically uplift them. Of this

2,26,978 families belonged to Adidraavidars and tribals. 44,737 youth have been trained in various trades at an expenditure of Rs.19.89 crores. A rolling fund of Rs.17.27 crores have been disbursed to 6,507 women groups involved in income generating trades. Modern tools were distributed to 26,643 craftsmen at a cost of Rs.4.85 crores.

According to National Sample Survey Data on below poverty line families, it was estimated that 34-38 percent people live below poverty line in Tamil Nadu during 1993-94. Through sustained development and effective implementation of various schemes, the Government of Tamil Nadu has

reduced the population of people living below poverty line. This will be proved when the statistical data of the new survey is completed. The Government have restructured the poverty alleviation programmes and launched an amalgamated "Swarna Jayanthi Gram Swarozgar Yojana (SGSY)" by merging all the existing self employment schemes like IRDP, DWCRA, TRYSEM, SITRA, GKY and MWS. The focus of this scheme will be on the technology tie-up, skill development, training and infrastructure and also market networking with cluster and group approach. 5-10 trades will be identified according to the natural wealth and man power of the area. And places will be identified for the technology tie-up, skill development and marketing. Benefitting groups will be properly trained in their trades by acquiring

Golden Era of Rural Development

modern technological know-how from the concerned establishments and quality products will be produced. Facilities will be made for the sale of these products by establishing village markets, sales centres in important cities and by providing sales van. For this scheme during 1999-2000 the Central Government's allocation will be Rs.46 crores and State Governments allocation will be Rs.15.33 crores, totalling Rs.61.33 crores.

Keerapalayam Panchayat leads in providing proper sanitary latrine facility in villages

Keerapalayam Village Panchayat has a population of 3,350 with 913 hutments. 45 percent of



this population belong to Adidravidar Community. Agriculture is their main occupation. Few groups indulged in weaving for income. Six ward members are males and 2 ward members are women. The Panchayat President is Thiru. Panneerselvam.

One year back, only 17% of the hutments had individual household latrines. There was no proper drainage also. The Government initiated a DANIDA project to construct toilets on participatory and demand driven approach in 1997. This is being implemented through village Panchayat, jointly by the Panchayat President and the Panchayat Vice-President. When this scheme was launched, the Panchayat President had doubts initially but on seeing the works in progress, his doubts were cleared two months later. Apart from improving the water resources and health care facilities in his village, he also played an important role to facilitate these things in his neighbouring villages.

The youth and the women were trained in masonry for the construction of latrines. By this training, a woman, Tmt.Kamal who was an assistant to mason, became a mason. 488 latrines were constructed till September 1998, through DANIDA's water resources scheme. Since several health care schemes could not be taken up by the DANIDA

programmes alone, it is being done through various other schemes. For those who do not own the place, public conveniences were constructed under Central rural sanitation programme. More than 75 toilets were constructed in the group houses constructed by Indira Awaraz Yojana. Under Jawahar Rozgar Yojana 2 km. length of drainage canal was dug and a toilet constructed for the school. Waste bins and carts to transport solid wastes were provided by non-Government organisation. In the same year 2 lakes were desilted and the bunds were strengthened under Job Assurance Scheme. Bathing platforms were constructed at a cost of Rs.4.10 lakhs. Drainage canals were constructed using Panchayat Unions general fund during 1998-99. Cement platforms for the pedestrians were constructed using village Panchayat's general fund. Keeralalayam village was announced as the 'village equipped with total health care' in the whole of Tamil Nadu, in September 1998.

How was this achieved?

People came forward to construct toilets when their doubts were cleared. Masonry training was imparted to men and women enabling them to construct their own toilets. This scheme is implemented on demand basis.

During September 1998, latrines were constructed in each house and two public conveniences for those who do not own land. By the awakening and awareness of this village, the nearby villages also demanded for these facilities. So a scheme has been formulated and sent to the Centre for approval to facilitate these in the whole Cuddalore District.

Likewise, all the Panchayat Presidents in Tamil Nadu should take special care to enhance the life-style of the people in villages by providing total health care, protected drinking water, toilet facilities to individual houses, public conveniences to those who do not own land and in schools; drainage facilities, ensure their village devoid of garbages and enhancing the environment. This is their duty also.

Guidelines to be followed

It is necessary to create awareness among the village masses to continue the implementation of the scheme. If the beneficiaries involve themselves in all the stages of the work while implementing, it will ensure, quality work as well as transparency. Importance of latrines, especially for women who yearn for privacy should be instilled in their mind. Sanitation and health care can be taught to the rural masses through various schemes for the development of women and through Arivoli Iyakkam. Household latrines can be easily constructed. The other schemes like drainage facility, transportation of solid wastes could be implemented by integrating the funds of various schemes in vogue. It is difficult to maintain public property without the involvement of public.

Employment generating schemes in rural areas

The lives of the rural folks depend mainly on agriculture. As this occupation is seasonal, people are left jobless in non-agricultural seasons. So the Central and the State Governments have formulated schemes to provide employment to the rural population.

1. Indira Awaas Yojana, for providing dwelling unit, free of cost.
2. Jawahar Rozgar Yojana
3. Employment Assurance Scheme
4. Million Wells Scheme

The IRDP and Rural Youth Self Employment Training Programmes have raised employment opportunities. Apart from this, Anna Renaissance Scheme and Self Help Programme are also being implemented. During the past three years, with the aim of increasing the employment opportunities, various developmental works have been undertaken by the rural development department.

Construction of bus shelters, kitchen, drainage canals were also taken up in this scheme. By these schemes, apart from providing employment, development works were also completed, thus improving the life-style of the rural public.

The ground water level is shrinking alarmingly due to numerous bore wells dug for drinking water, irrigation and for industrial purposes. Irrigation wells have been dried up in several places. So priority is being given to safeguard and store the rain water. So the work relating to repairing of irrigation canals, irrigation ponds are being carried out to store the rain water. During the past three years, through the employment assurance scheme and million wells programme, works were undertaken to desilt the waterways and irrigation tanks and lakes. These works were undertaken with an allocation of Rs.1 lakh per Panchayat, according to the announcement made by the Hon'ble Minister for Rural Development. By these works and by the plantation of trees, rain water has been stored, resulting in the rise of ground water level.

Houses for the poor in rural areas

This programme aims at providing dwelling unit, free of cost to the poor families of SC/ST, freed

bonded labourers in rural areas and the non SC/ST people who are living below poverty line. The State Government is providing assistance of Rs.12,000 per house for constructing houses with RCC roofing, in addition to the amount sanctioned by the Central Government. The total unit cost of the house works out to Rs.32,000 in normal terrain and Rs.34,000 in difficult soils and hilly areas. The houses will have a household latrine and a chullah.

1,69,566 houses including 83,487 houses pending construction were taken up by this Government after assuming office in 1996. 2,46,941 houses were completed till 31-5-1999. Besides this, 4,688 houses were taken up additionally under basic minimum service during 1998-99.

83,487 houses were pending construction as on 13-5-1996. 71,615 houses at a cost of Rs.193.320 crores during 1996-97; 56,621 houses at a cost of Rs.151.20 crores during 1997-98; 41,330 houses at a cost of Rs.132.100 crores during 1998-99 were taken up for construction. 2,53,053 house constructions were taken up at a cost of Rs.476.620 crores, in total.

Under Basic Minimum Service 4,688 houses were taken up for construction at a cost of Rs.15 crores.

Each house is being constructed not less than an area 201 square feet.

As a special feature these houses have a raised platform (called 'Thinnai' in Tamil), in the front portion of the house for resting purpose and a wall separating the kitchen with shelves on both sides.

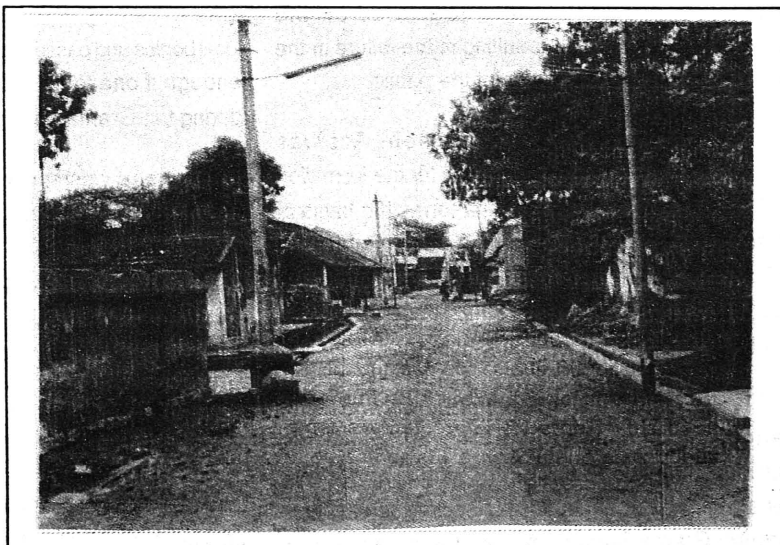
Under electrification programme, each house is fitted with one electric bulb free of cost. Basic amenities like, road facility, protected drinking water, etc. are also provided. 46,768 houses have been taken up for construction during 1999-2000.

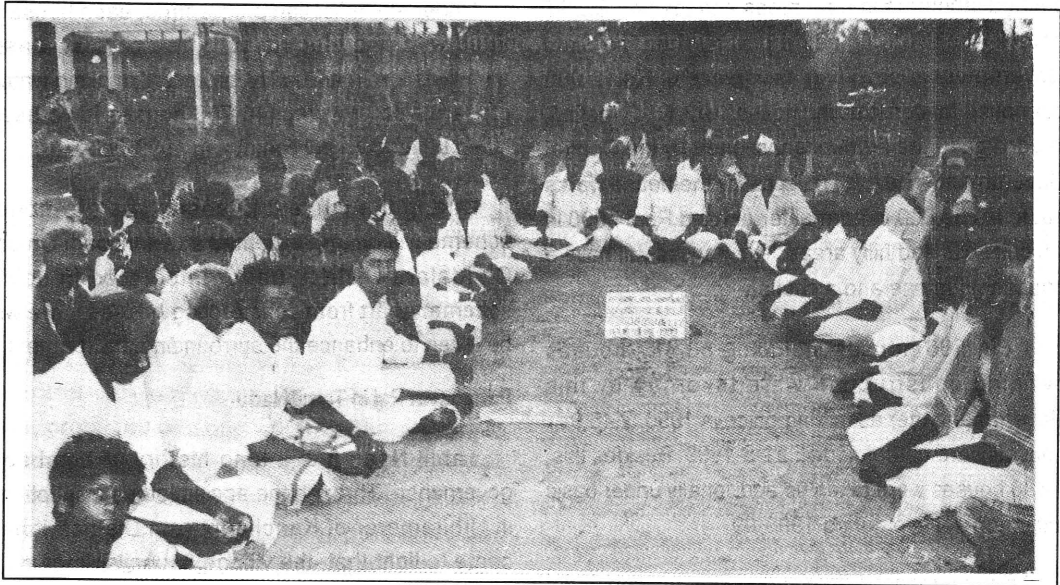
During the current financial year, a model scheme will be implemented in Kurinjipadi Union, Cuddalore District, under integrated housing scheme. Apart from constructing houses, care will be taken to enhance the surrounding environment.

Panchayat Raj in Tamil Nadu

Tamil Nadu has a long history of local self governance. Through the ancient stone inscriptions in Uthiramerur of Kancheepuram District, it has come to light that, the village councils, known as "Panchayats" and community groups known as "Vaariams" existed even during the 10th and 11th centuries under the reign of Cholas. This system was destroyed by the British fearing that it may pave way for agitations against their rule, if anything was organised.

During the post independence era, the concept of local self government gained importance and its relevance was further fortified through the





implementation of community development programme, introduced during 1952. Zilla board at district level, Taluk board at taluk level and Panchayat board at Panchayat level were formed. In course of time, Zilla boards were abolished which were replaced by District Development Councils in Tamil Nadu. Thereafter two tier system of local bodies at village level and block level continued. As there was no elected representative in the local bodies, the revenue started depleting. The development works solely depended on the Governments' subsidies resulting in the failure in the involvement and participation of the public.

73rd Constitutional Amendment Act was introduced in 1992 which paved way for the formation of 'Grama Sabha'. Grama Sabha forms the basis of democracy. The strength of the Grama Sabha will reflect on the strength of the democracy. The voice of Grama Sabha is the voice of the village. In Grama Sabha the administration is transparent.

The Government alone cannot identify and rectify various defects and malfunctions while implementing developmental works by various departments. But a responsible society can set right through Grama Sabha. This will be more practical

and would pave way for a sincere, transparent and responsible administration.

The Tamil Nadu Panchayat Act was enacted in 1994. According to Section-3 of this Act, Grama Sabhas were formed with the electorates of the villages as members. Initially, it was said that one third of the members had to attend Grama Sabha meetings. But as it was not practical in especially bigger village Panchayats, this Government soon after assuming office, conducted elections to the local bodies and passed an amendment stating that it was enough if one tenth of the members were present during the Grama Sabha meetings.

Though it was enough to conduct Grama Sabha Meetings twice a year, the Chief Minister Kalaignar has advised to convene Grama Sabhas four times a year, i.e. on January 26, May 1, August 15 and October 2. This Government is taking all steps to convene Grama Sabhas and implement schemes successfully.

The necessity of Grama Sabha

An opportunity is provided to poor, downtrodden and women of the village to run the administration.

By this, the common man can directly assume the powers entrusted to the local bodies. Thus the Grama Sabha will supervise the Government's various welfare schemes resulting in transparent administration. As this Grama Sabha discuss various pros and cons of a project they also act as a guidance body to the Panchayat. This ensures that the benefit of the schemes reach the people hundred percent.

How to conduct Grama Sabha?

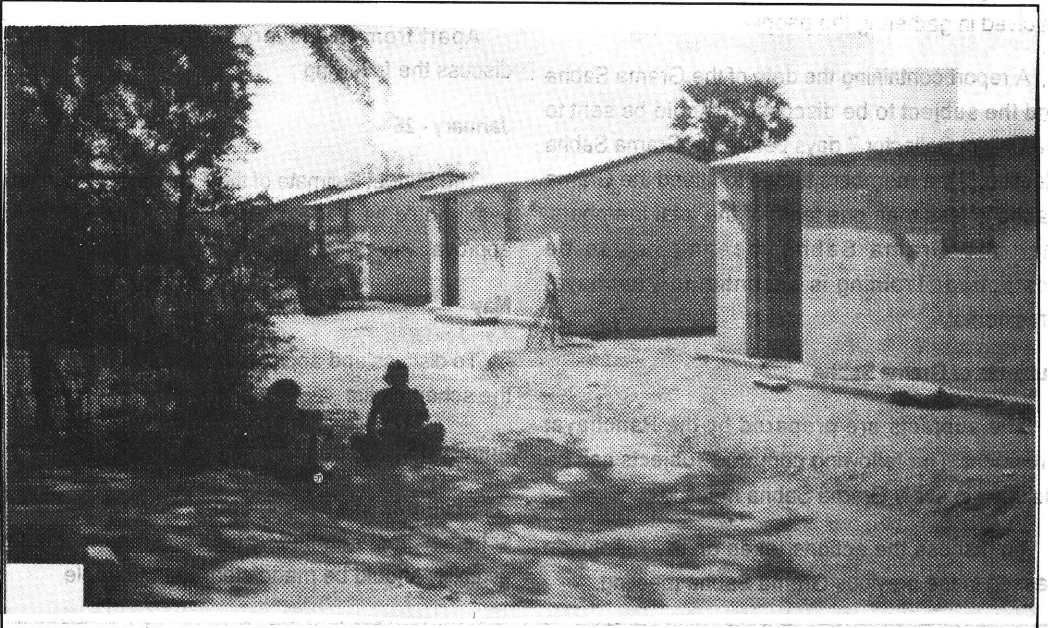
The Panchayat President has to convene the Grama Sabha. He will preside over the meeting. In the absence of the Panchayat President, Vice President will preside the meeting. If both of them are absent, then the members can select a member to preside the meeting.

If the Panchayat President fails to conduct Grama Sabha, then the District Collector has to convene the Grama Sabha. If the Grama Sabha is convened by the District Collector, then he will appoint an officer of not less than the rank of BDO, for supervision. He

has to send the report of the meeting to the District Collector within 72 hours.

The duties of Grama Sabha

- ★ To approve the village Panchayats development schemes and annual budget.
- ★ To approve the selection list of the beneficiaries for various welfare schemes.
- ★ To inspect and advise the village Panchayat on developmental schemes in implementation.
- ★ To supervise and inspect developmental works implemented through local bodies by various other departments.
- ★ To encourage the public to participate in the development works by lending their manpower and meet out the expenses.
- ★ To promote social amity and unity among the people of various castes and religions.
- ★ To consider and go into the details of the annual budget of the village Panchayat and to audit report.



How to convene the Grama Sabha

The Grama Sabha should be convened in a public place within the jurisdiction of the village Panchayat. The date of the Grama Sabha will be announced by the Panchayat President. The announcement should be made seven days before the date of the Grama Sabha. The notice should be pasted or displayed in public places like Panchayat office, School,

Noon-meal Centres, Overhead Water Tank etc. The date, the venue and the time of the Grama Sabha meeting has to be advertised in all the dwellings of the Panchayat. This could be printed as bit notice and distributed to all the houses. The District administration can release advertisement. People can be invited to attend the Grama Sabha by showing slides in the Cinema halls. NGOs can be involved in gathering the people.

A report containing the date of the Grama Sabha and the subject to be discussed should be sent to the District Collector 7 days before the Grama Sabha Meeting. If the members turned to attend the Grama Sabha is less than one tenth of the total members, then the Grama Sabha meeting has to be postponed. Training is essential to Panchayat Presidents.

Subjects of Grama Sabha

The subjects are prepared by the Panchayat President. The following common subjects can be included in every Grama Sabha meeting.

To discuss the actions taken on the resolution passed in the previous Grama Sabha meeting.



To discuss on the merits and demerits in the administration and implementation of the schemes by Panchayat and other departments.

To discuss on the works that could be done by the people themselves and on the works that could be taken up in Self Help Programme with the assistance of the Government.

Apart from this, every Grama Sabha should discuss the following :

January - 26

The Budget Estimate of the Panchayat for the next year should be placed before the Grama Sabha for approval.

May - 1

To discuss and approve the beneficiaries list and the schemes list.

August -15

Schemes like eradication of poverty and other schemes implemented by the Government and the eligibility should be made clear to the people.

October -2

Interim inspection should be done regarding the development works implemented by Panchayat and other departments. Should submit the audit report of the previous year.

How to proceed with the Grama Sabha

A black board can be used to explain various schemes. The subjects discussed and the amendment should be registered. It is the duty of the Panchayat President and the Members to conduct the meeting efficiently and amicably. If a charge is made on the Panchayat President or the Members by the public, they should clarify with proper and authentic proof.

The budget expenditure and all the receipts and registers should be kept in a safe place and shown to the public for public auditing.

The members attending the Grama Sabha should sign in the proceedings register. The results of the discussions should also be entered subjectwise in the same register. And it should be

recorded as amendment and signed by the Panchayat President.

The report of the meeting should be sent to the District Collector within three days.

Open irrigation wells free of cost to poor, small and marginal farmers

The million wells scheme was launched as a sub-scheme of NREP/RLEGP during 1988-89. This scheme, which was originally part of 'Jawahar Vela Vaippu Thittam' was subsequently made an independent scheme with effect from 1-1-1996. The objective of the scheme is to provide open irrigation wells free of cost to poor, small and marginal farmers and freed bonded labourers. Preference is being given to Scheduled Caste/Scheduled Tribe. The expenditure is shared between the Centre and the State on 80:20 basis.

Soon after assuming office, this Government apart from completing the pending 5,839 Jeewandhara wells, allocated 14,132 Jeewandhara Wells to poor, small and marginal farmers and freed bonded labourers, during the past three years, of

which 11,280

Jeewandhara Wells have been completed.

The pending Jeewandhara well works as on 13-5-1996 was 5,839. 5,235 well works were taken up during 1996-97 at a cost of Rs.23.540 crores; 4,849 works at a cost of Rs.21.590 crores during 1997-98 and 4,048 works at a cost of Rs.21.280 crores during 1998-99.



Poor, small and marginal farmers who had been depending on rain water for cultivation have now improved their standard of living by cultivating various crops. These farmers are provided with free electricity every year on priority basis by separate allocation.

Electric pumps are also provided on loan schemes with subsidy with yet another allocation.

Drinking water pipelines to the residents in rural areas

It is the responsibility of the village Panchayat to provide protected drinking water facilities in rural areas.

The Government has passed an order to provide 55 litres of water per person per day in 66,631 rural habitations in Tamil Nadu and to facilitate pipeline to the residences in the areas with water resources as in the urban areas.

The TWAD will prepare the plan to provide pipelines in rural areas. Rs.30 should be paid per month for a Panchayat water connection. A deposit of Rs.1000 will be collected for the residential pipeline water connection. If an additional pipeline is necessary then the Panchayat should study the feasibility and avail prior permission from the TWAD. If there is surplus water, then the Panchayat can provide new residential connections. But if a large number of connections are given, above the stipulated number, resulting in hardship for public



water taps, then the Panchayat can disconnect the extension of residential pipelines.

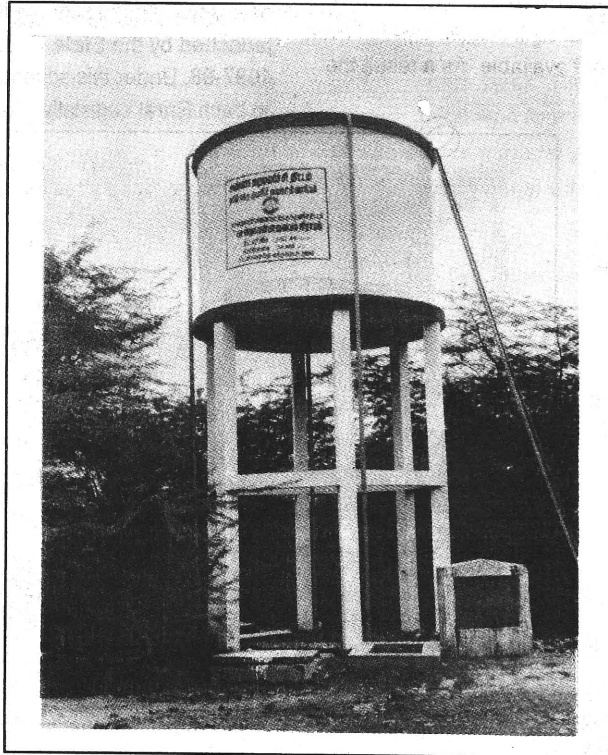
Self Help Programme

Self Help Programme is a scheme conceived and launched during 1997-98 by the Hon'ble Chief Minister of Tamil Nadu to promote self-reliant and self-help attitude among the rural people. This scheme attempts to reverse the growing dependency syndrome in the rural areas on Government and bring them back to the mainstream of developmental process by inculcating community involvement and participatory approach in development. Community needs are articulated by the public through Grama Sabha and after thorough deliberations, these needs are prioritised and converted as implementable projects where the public themselves actively contribute in cash, kind or through labour to supplement the government funds and execute the works. Government provide necessary technical support to achieve this. The traditional concept of "Kudimaramathu" in Tamil Nadu is being revived through this scheme in all spheres as the scope of

this scheme is extended to all activities that benefit the public. There is no rigidity under this scheme to take up only particular type of works. This scheme maximises the utility value of the funds allocated by Government. Apart from expediting the execution and improving the quality of work, it also promotes the concept of community maintenance of public assets.

As per the guidelines, for each and every developmental block, a Namakku Naame motivating team is formed comprising officials, volunteers and NGOs. This team will encourage the villagers to articulate their felt needs during Grama Sabha meeting and identify the projects. Participation in planning, contribution, execution and maintenance of such assets by institutionalising all

these processes, are the unique aspects of this scheme. Initially, the Government released Rs.10 crores under Namakku Naame Thittam Grant. As the response from public was overwhelming, an additional amount of Rs.4 crores was released as special grant. A provision of Rs.10 crores is being made for the year 1999-2000 in the first phase. From 1999-2000, this scheme is also extended to urban areas.



during 1997-1998

4,932 works were taken up at a total cost of Rs.17.78 crores. Of this, people's contribution was Rs.6.90 crores.

during 1998-99

4,805 works were taken up at a cost of Rs.30.20 crores. Due to the immense success of this

scheme among the people, their contribution raised to Rs.12.59 crores.

As the Self Help Programme is gaining more popularity, day by day, the Government enhance its allocation of funds every year.

The people of Mahalipatti Panchayat, Vennanthur Panchayat Union, Namakkal District, decided to construct a connecting road

from Masanipatti to Koraikadu, a distance of 1.2 km. This road was laid at a cost of Rs.7.60 lakhs with the Government's subsidy of Rs.2.40 lakhs. The people contributed as fund and labour to the tune of Rs.5.20 lakhs. 7,710 people in 5 villages benefit by this road. This road was inaugurated by Hon'ble Chief Minister on 18-9-1997. People who had to travel 10 km. to reach the National Highway are now using this road and travel only 3 km. to reach the National Highway enabling them to transport their merchandise easily.

Renovation of temple tank and inlet channel - Kanniyakumari

The Bagavathi Amman temple tank was constructed by Travancore Maharaja in 1911 in the Kanniyakumari town. This tank water was used by the temple for poojas, abishekam etc., and was also a water resource to the surrounding area. This tank has been connected to the Kumareesal tank, Manachiparai Kadaimadai area. The Maharaja ensured that Kumareesal tank was always full even if the dam water was not available. As a result the temple tank was also full throughout the year. Open canal to a distance of 2.3 k.m. and an under ground canal of 0.4 k.m. were the inlet canals and Kumareesal and temple tanks were connected. As the tank was full all the time, it acted as a water resource to the town area.

Later as the temple tank was not maintained properly, it was left unused from 1975 and water coming from Kumareesal tank also stopped. As it was inside the town limit and as the renovation would cost much, the tank was neglected for 23 years. The public came forward to renovate the tank under Self Help Programme. A five member committee was formed to study the feasibility. The Government granted a subsidy of Rs.2.50 lakhs. With people's participation the renovation work was completed at a cost of Rs.10 lakhs within two months.

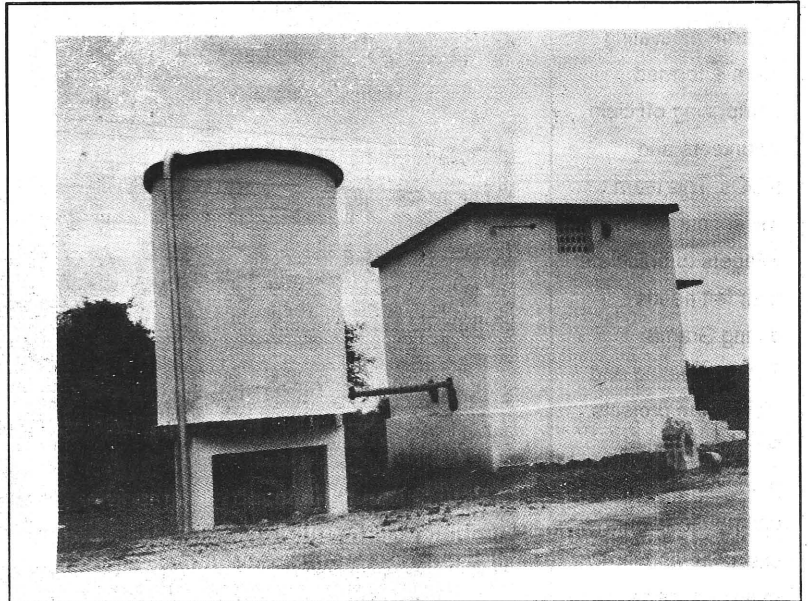
Presently, this temple tank is used for temple rituals. The surrounding wells in the residences have started sprouting water. People who went to far away

places to collect water are now joyfully using this tank.

Bridge, road and school building works have been completed and computer software etc. for the schools have been provided by the contribution of the public.

Anna Renaissance Scheme

Anna Renaissance Scheme is a pathbreaking rural development scheme in the Country, which was launched by the State Government during the year 1997-98. Under this scheme, one village panchayat in each Rural Legislative Assembly is chosen by the



MLA for the implementation of the scheme every year. Out of 234 assembly constituencies, this scheme is implemented in 212 constituencies. This programme aims at the convergence of all schemes and services in the selected village panchayats to make it a model village in all respects. All the minimum basic needs like drinking water, link roads, street lights, education, health, public distribution system, child care centres etc., are provided under this scheme.

This scheme addresses the village problems in two ways. Basic infrastructural facilities like roads,

drinking water, streetlights, school infrastructure, health facilities, public distribution system, house for houseless, rural sanitation and drainage etc., are created as a part of capital works. Regarding development of human resources and improvement of social infrastructure (PQLI), the camps and campaigns are systematically organised by the district administration. The administrative machinery organises campaigns like health camp, immunisation camp, eye-camp, total literacy campaign, small savings campaign, farmers forum, etc., which make the village distinctly progressive and different from other villages in terms of economic and social infrastructure and create better awareness for higher standard of living.

The State Government had sanctioned Rs.51.85 crores during 1997-98, apart from the special subsidy for the distribution of protected drinking water. During 1998-99, apart from the special subsidy of Rs.68.94 crores for drinking water supply, the Government had sanctioned Rs.75 crores for Anna Renaissance Scheme. More funds required for the completion of the schemes are availed from integrating various development programmes.

Achievements

During 1997-98, nine village panchayats were selected in Kancheepuram District, for implementing this scheme. In Kancheepuram Constituency, Thamal Panchayat with a population of 7,159 (according to 1991 census) was selected for this scheme. The State

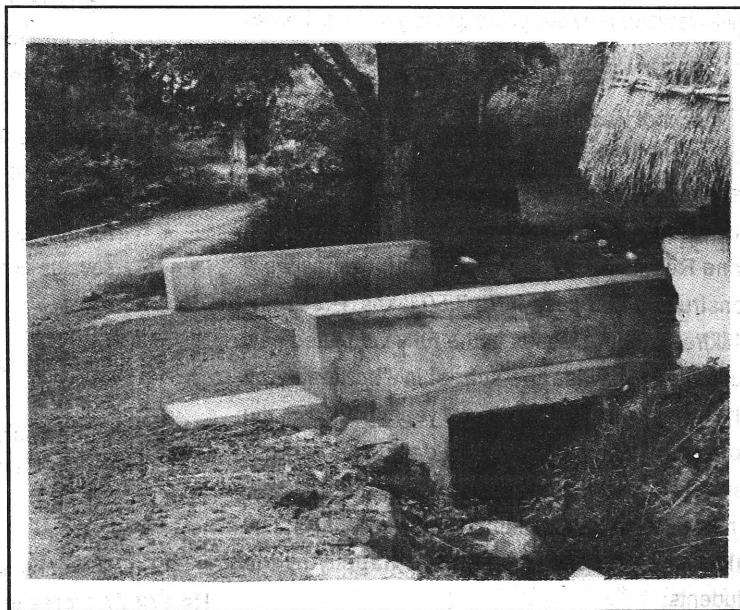
Government spent Rs.24.68 lakhs as subsidy for Anna Renaissance Scheme. Rs.27 lakhs for drinking water supply and spent Rs.40.87 lakhs from other related departments. Two village roads, 76 buildings, 9 drinking water works, 50 street lights and 19 other works were taken up. The people's life-style has been improved by this scheme and presently Thamal village poses as a model village.

Grass farming

Thirty years back, the milk distributors co-operative union was formed and 19 acres of land was allotted for a model grass farm in Ponniam Manpattarai in Thamal village. But that dream did not come true.

During 1998-99, under IRDP, arrangements were made to fence the area and to establish water resources for the growth of grass and cattle fodder. Presently 1,400 members benefit by this.

A mudless cement road was laid in Velakkan Natham village of Natrampalli Panchayat Union in Vellore District.





Speciality of Anna Renaissance Village

- ★ Health checkup done to all school children.
- ★ Individual residential latrines constructed.
- ★ New street lights to the new dwellings.
- ★ Additional buildings constructed to schools.

377 drinking water works were undertaken in 25 Panchayats in Vellore District and they are being provided protected drinking water.

The unaccessible village of Aarakodu village in the Nilgiris which had not been provided protected drinking water previously through any of the schemes have been taken care of and presently benefited.

A school was functioning in dark and suffocating building in Athikaripatti village in Ayothiyapattinam Panchayat Union, Salem district. The house owner was also urging them to vacate the building. Using Anna Renaissance Scheme three buildings were constructed at a cost of Rs.7.50 lakhs. Presently, Children attend classes in the fully ventilated new buildings. Likewise the school in Thottipalayam which was constructed several years back with the donation of the public was dark and without ventilation. Under employment assurance scheme, a new building was constructed at a cost of Rs.2.59 lakhs and presently being used happily by the students.

- ★ Buildings constructed for public distribution and noon meal centres.
- ★ Agricultural training camps and insemination and vaccination camps for cattles.
- ★ Various schemes are integrated and implemented to upgrade the life-style of the people.
- ★ The advantage of thrift cum savings are canvassed by the self help groups.
- ★ All the families are encouraged to open savings account.
- ★ Presently, women discussions, agricultural meetings and health camps for the cattle are being undertaken in the Anna Renaissance Scheme villages. These things differentiate them from other villages.

29,679 works were taken up at a cost of Rs.172.77 crores in 212 villages during 1997-98.

1,747 works alone were taken to provide protected drinking water at a cost of Rs.56 crores. Exceeding all the other schemes, the allocation for Anna Renaissance Scheme was Rs.75 crores during 1998-99.

23,910 works were taken up at a total cost of Rs.180.43 crores, during 1998-99. This includes 1,462 drinking water works at a cost of Rs.65.07 crores, 1,392 tar topped road works, 938 other road works and 6,950 building works for schools and building works for public distribution shops.

Rs.75 crores have been allocated for implementing this scheme in 210 village Panchayats in 210 Assembly Constituencies, during 1999-2000.

As the works in Alandur Assembly Constituency in Kancheepuram and Panchayats in Salem District had already been completed, these two places have not been included in this year's action plan.

Grama Sabha, Social auditing, transparent administration - apart from strengthening the basis of democracy pave way for improving education, health and sanitation. If all the works of this scheme are completed then that village will become a model village for other villages to follow.

★ ★ ★

The following basic amenities have been provided by the Rural Development Department

	1996-97		1997-98		1998-99		TOTAL	
	works	estimate	works	estimate	works	estimate	works	estimate
		Rs. (in crores)		Rs. (in crores)		Rs. (in crores)		Rs. (in crores)
Group Houses	71615	193.36	56621	152.88	41330	133.67	269566	479.91
Tar Roads	5714	140.200	4888	137.200	6283	185.34	16888	462.74
Buildings for High Schools and Higher Sec.Schools	-	-	-	-	796	27.86	796	27.86
Water works	16785	113.000	7628	110.00	1157	155.36	36000	378.36
Fair Price Shops	263	3.500	1698	22.900	2996	44.940	4957	71.340
Buildings for Primary Schools	1893	37.860	929	23.225	1484	40.050	4306	101.135
Noon-Meals Centres	422	4.200	345	3.795	387	3.630	1154	11.625
Buildings for Panchayat Offices	151	2.040	259	3.240	280	3.790	690	10.010
Jeevandhara Wells	5235	23.54	4849	21.59	4048	24.280	14132	69.41
Television Rooms	22053	35.29	-	-	-	-	22053	35.29
							270535	1647.74

State Bank of India with its vast network of branches particularly in Rural and Semi-urban centres, has launched a pro-poor scheme of lending through Self Help Groups operating in rural centre with rural poor particularly agricultural labourers as clients.

The concept of SHG through its basic principles of savings/thrift and credit/lending has been promoted by the Non-Governmental organisations with their service background. Homogenous groups with exclusively women, men and few mixed members were formed and guided for their Socio-economic development. Women empowerment has been the focus. Social development activities like health, children and adult education, drinking water, sanitation and economic development activities like cultivation of crops, rearing of milch animals, sheep/goat, poultry, birds, small business, village artisan work have been focused among the members. Banking habit, management of group activities, maintenance of accounts by the SHGs are also aimed at with collective responsibility. Leadership training, representation of common issues to the authorities, participation in Panchayatraj election directly and indirectly

STATE BANK OF INDIA AND SELF HELP GROUP CONCEPT IN TAMIL NADU

are also important agenda for the SHGs formed and guided by the NGOs.

Banking activity by SHGs have improved well by rotating their savings/out of their own income/thrift of house money. The credit requirement particularly their house expenses takes the major share of group lending in the initial stage but slowly improves for production purposes mainly for agricultural and allied agricultural activities as the age of the group goes up. The members are slowly coming out of local money lenders' clutches with this cheap and simple credit particularly after linking with Institutional credit (Banks).

Banks in Tamil Nadu excluding Co-operative Banks have linked SHGs with financing as under:





District have disbursed loans to the tune of Rs.16.38 lakhs for 115 SHGs (179 members) of which 112 SHGs are women groups. Total savings are Rs.12.29 lakhs. The NGOs involved are ASSEFA, SRDT, TANWA, ISED, ARD, ARWEL and Direct (STATE BANK OF INDIA, Ayyampettai Branch).

Besides, STATE BANK OF INDIA branches spread over Tiruchirapalli, Tiruvannamalai, Tuticorin and Kanniyakumari have covered SHG groups more number of groups.

STATE BANK OF INDIA and NGOs have initiated income generation programmes during second course of lending. The activities in particular are

1. Candle making; 2. Zari work (embroidery work); 3. Purchase of Milk Van.

TRAINING

A training programme was organised by the NGOs for candle making at the village / factory site for one day. The raw materials are supplied and the finished products are purchased (buy back) by the training institute (Anbalayam, Arumbakkam, Chennai)

MILK VAN PURCHASE

It is unique to note that in STATE BANK OF INDIA, Pavinjur area (Latur Block in Madurantakam area of Kancheepuram District) out of 50 SHGs financed during 1998-99, 25 women SHGs have utilised the loan amount collectively for purchasing a Milk Van in order to reduce the cost of their own milk to be transported to ASSEFA Chilling Centre (23 kms) besides earning income for the groups by transporting others milk also. The milk van was purchased under the leadership of "Federation of Sarva Seva Dairy Development by SHG women". The vehicle is plying 400 kms daily to collect milk canes from various villages and earning Rs.1000 per day as hire charge.

Year	No. of SHGs Linked	Bank Loan Disbursed (Rs.in lakhs)
1992-93	22	2.239
1993-94	34	4.247
1994-95	203	21.250
1995-96	205	34.649
1996-97	408	59.552
1997-98	444	218.166
1998-99	2633	558.935
Total	3949	899.038

STATE BANK OF INDIA (31-3-1999)

In Tamil Nadu, State Bank of India Branches (35) sofar linked 840 (11362 members) SHGs with loan limit of Rs.1.37 crores. There are 707 women SHGs. The SHGs have saved Rs.0.29 crores against which 1:1 to 1:4 ratio of savings loan has been sanctioned and disbursed under Agricultural Term Loan with interest applicable to Agricultural segment.

During 1998-99, Kancheepuram District was identified as Project District for intensive coverage, besides other areas. Accordingly, with active co-ordination of 11 NGOs, 10 branches in the

You have bought a ticket for a train journey from Mumbai to Chennai. When the train reaches Renigunta, still 150 kms. from Chennai Central, you are told by the Railways: "This is as far as the train goes today. You can go the rest of the way on your own". No one would tolerate such a situation - not even the Indian Railways.

★ ★ ★

You are a customer of the State Electricity Board. You pay by units consumed, which in India means, you pay for having an alternating electric current supply at a voltage of 230 volts

IT TRENDS

and a frequency of 50 hertz. In most parts of India, barring a few pockets of efficiency, what we actually get, is an AC supply at any thing from 180 to 210 volts at a frequency which is always a few Hz below 50. As a percentage of the voltage that you actually paid for, this is even worse than being asked to get out in Renigunta, when you paid for reaching Chennai. Yet we meekly accept this situation for years on end.

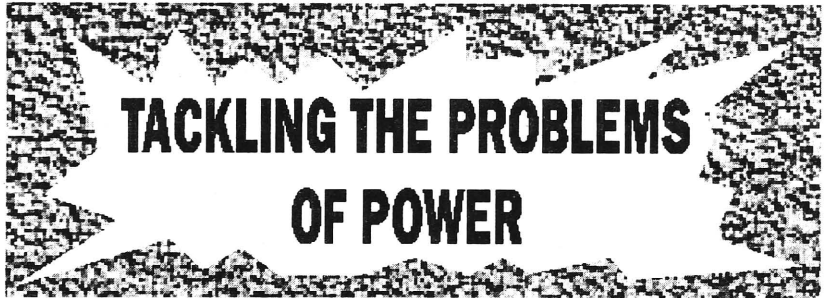
★ ★ ★

What do we do about the 'shortfall' in electric supply voltage? Mostly nothing - or so we think. Actually, we pay twice over for the same power: once to the electric utility company which does not deliver the correct voltage - and once more through every device we use - fridges, TVs, washing machines - which incorporate special circuits to accept big swings of voltage. Alternately the suppliers suggest the use of stabilizers - but in either case the customer pays. We are used to these household devices, "somehow" working at all voltages. And if they

stop working for short spells, we accept it like the fatalistic, eternally patient Indians, we are.

This 'chalta hai' attitude will not do in the world of computers. Today's PCs and servers come with fairly rugged Switched Mode Power Supplies (SMPS) of an internationally accepted rating. They are geared to accept some thing like 10 percent in voltage variations. They are also inherently capable of accepting a deterioration in the ideal shape of the alternating current - a perfect sine wave - and will work even when this shape is only approximately achieved: for example, by smoothing the more squareish shape that the typical DC-to-AC inverter delivers.

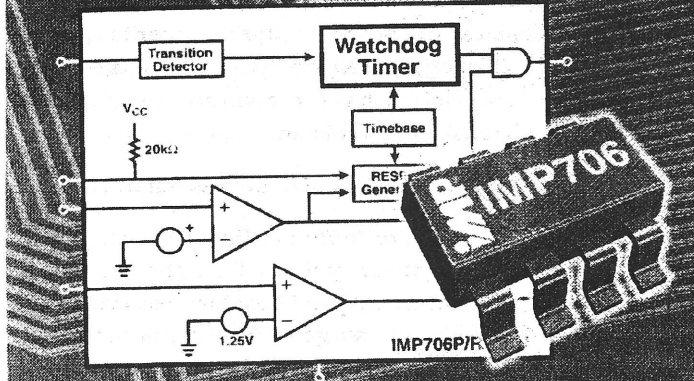
But even the best SMPS is not proof against the more violent deviations from the normal, that the Indian electricity utilities palm off on consumers. Add to that, the special environmental problems that users in tropical countries have to live with - like lightning.



If a bolt of lightning strikes a transformer at the roadside distribution point of the electric supply line, it will travel instantaneously through the wire, and the surge will almost certainly destroy the power supply module. If the PC is connected to a modem, powered by its own battery eliminator, that too may be destroyed. If the surge reaches the motherboard, it is your luck if two chips or ten are destroyed. An unprotected PC hit by such an electrical "event" could end up in a flash, with Rs.10,000 - 20,000 of damage. Clearly this is not a risk worth taking. What are the other, more common, "power events" that electric supply lines are prone to?

- Anand Parthasarathy

3/3.3/4V μ P Supervisors



Power events

- ✧ *Sag (or brownout)*: short term decreases in voltage - the most common power disturbance. Electric supply companies, faced with excessive demand at peak time, are known to resort to "rolling brownouts" - lowering the voltage below the rated value, in a systematic manner. Sags can cause the computer to crash - or the keyboard to get locked.
- ✧ *Spike (or impulse)*: a sudden dramatic increase in voltage, typically caused by lightning - or a supply line being switched on after a long shutdown. Spikes can destroy many parts of the computer as explained above when discussing lightning effects.
- ✧ *Blackout* : total power loss, could be caused by tripping due to excessive demand on the utility or accidents which bring down supply lines.

In India of course, the blackout could last for hours - due to unannounced maintenance shut downs, regular power cuts or what is delicately called "load shedding". In a blackout, all current work resident in the RAM memory of the PC or in the cache will be lost. The File Allocation Table (FAT) of the hard disk may be lost, which may destroy all data stored on the disk.

✧ *Surge* : a short term increase in voltage, lasting a fraction of a second. They are caused when other heavy equipment on the same line - like air conditioners and heavy motors - are switched off. The PC power supply can usually absorb small surges.

✧ *Noise (also known as electro magnetic interference or EMI)* : electrical interference which corrupts the smooth sine wave shape of the AC power. Caused by a variety of disturbances in the vicinity. The

most common example is the effect of switching on a "mixie" or similar motorised equipment on the same phase of the power supply line. Noise can cause temporary "data drop out" or other glitches which may not be immediately apparent.

This then is the bad news : we operate our computer in a very dicey electrical environment. There is some consolation in the fact that in most parts of the world, some or all these problems may be present. An IBM study showed that worldwide, a typical computer is subject to 120 power "events" a month. We simply cannot expect to get good clean reliable power from our power utilities. So what do we do? Welcome to the world of power conditioners - the "safai wallahs" of the power business who clean up the mess they receive and deliver steady power within a range the computer can tolerate.

About four years ago, when I treated the subject of power conditioning in these columns, I mentioned a variety of options: constant voltage transformers (CVTs), stabilised power supplies and Uninterruptible Power Supplies (UPS). That was because, the first two could protect the computer from supply problems - as long as the supply was coming. They were much cheaper than the UPS option - and as long as the supply was continuous you could manage with either of them. Today, we need

not even discuss these two options, because the supply situation has deteriorated nationally and most states suffer from regular power cuts in the working hours. A black out does not hit you once in a while - like lightning. It is for thousands of Indian PC users, a daily fact of life. There is another new dimension: the days of DOS are over. Windows is now the de facto standard on Indian desktops and portable PCs. And Windows has become so bloated in its current versions - both Windows 98 and Windows NT (soon 2000) that restarting, after an unplanned shutdown is a major irritant. Indeed, unlike DOS, the operating system just does not spring back after a forced shutdown, unless one goes through a elaborate scanning routine. The result is that most of us just cannot afford to have the machine trip during use. Ergo, an uninterruptible power supply is now the ONLY viable alternative, stiffer price notwithstanding.

UPS : types

Fortunately a wide choice of UPS models is available in India, both indigenous and of foreign make. Most good models will accept mains voltages at least between 170 and 260 volts AC and will deliver a voltage of 230 volts plus or minus one percent; at a frequency of 50 HZ plus or minus 0.1 percent. However there are so many models in the market that a choice can be difficult: It is better to understand what the different types of UPS deliver before selecting the best one of you.

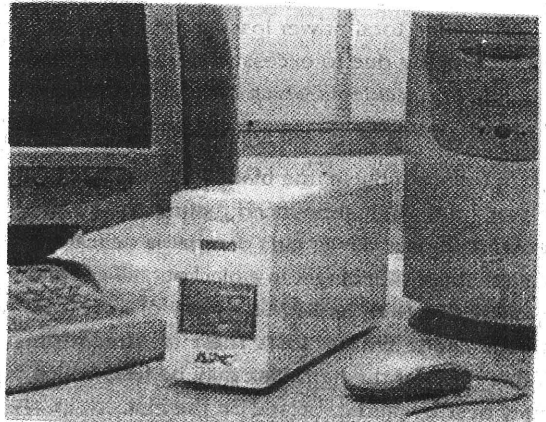
A good power conditioner company should provide this information - and also explain all the jargon they use to specify their products. But the vast majority just state the rating - and whether the unit is off line or online.

The American Power Corporation (APC) a leading US-based global power protection company, recently conducted seminars in II Indian cities to highlight their technology and their product line. I attended one of these roadshows and came away educated about many new technology trends. More usefully,

the website of the company (www.apcc.com) contains some excellent basic material in the form of technical papers and tutorials where the basics of power failure "events", UPS technology and all the "buzz words" are nicely explained. I have drawn on some of this material for this column.

The common types of UPS are as follows :

1. *Standby or 'offline'* : This is the cheapest, commonest type for PCs. The AC line is "normally on", and better models come with a filter and surge suppressor in the mains path. It switches to the battery/inverter line if mains power fails. The inverter is normally off and operates only when the mains power is absent, i.e. it is on "standby".
2. The Line interactive UPS, is very common for small business and small network environments. Here the inverter is always connected to the output of the UPS. When AC power is available, the inverter charges the battery. When AC power fails, the transfer switch operates, and power flows to the output from the battery-inverter line to the output. Since the inverter is always 'on', some degree of additional filtering is provided and small surges are absorbed, which means the system acts as a regulator to some extent. This is a popular design in the 0.5 KVA to 5 KVA range.



3. The Standby On-line Hybrid UPS, is common at ratings upto 10 KVA. The standby converter from the battery is switched on when AC power fails - as in the Standby UPS. There is no transfer time during power failure. However this is not online in the strict sense because the primary power path is not always 'on'. The path through the rectifier is online; but the other path through the DC-DC converter operates in standby mode.

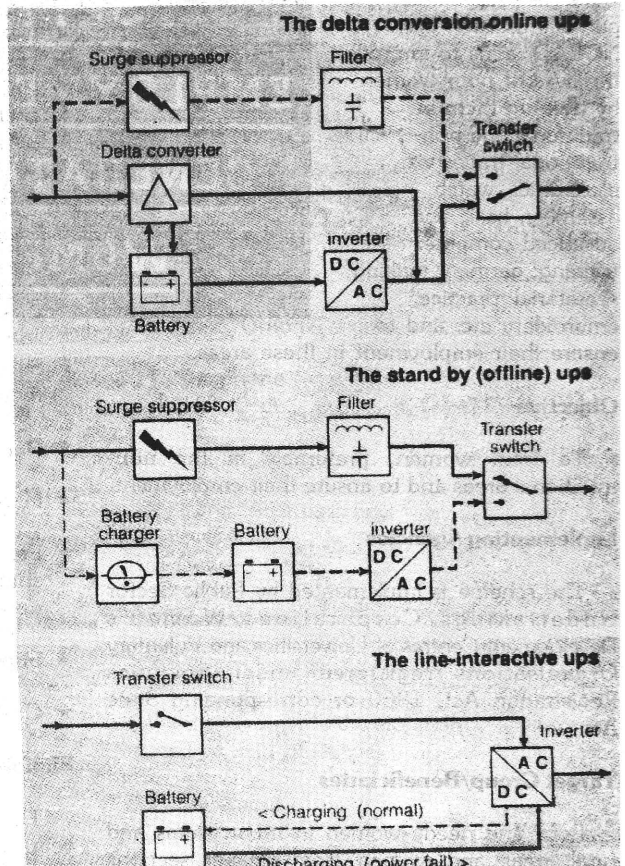
The Double Conversion On-Line UPS is very common at ratings above 10 KVA. The block diagram is identical to the Standby UPS with one difference: the 'normally on' path is through the inverter/battery combo.

The filtered AC line is only a backup. Hence there is no transfer time - unless one of the blocks in the primary path: battery charger, battery or inverter - malfunctions. Since battery charger and inverter are always 'on', this design results in greater heat and consequent reduced efficiency.

Delta Double Conversion Online UPS, is a recent technical improvement over the last type and comes in all sizes above 5 KVA. As before, the inverter line is always 'on' and supplies the output.

But an additional Delta converter backs up this power and provides another line to the transfer switch. If AC fails or if supply is disturbed this design behaves as before and supplies through the battery line. But If AC line is good the delta converter provides a more efficient path to the output.

APC provides an elegant analogy for its patented Delta technology: You have to take a load from the 4th floor of a building to the 5th.



In the double conversion online model, you come down to the ground floor and climb five floors up. In the delta (or "difference") model you climb up from the 4th to the 5th floor.

Armed with this information, customers both individual and corporate PC users, can hopefully decide what technology best meets their needs - then look for suppliers who offer a product with that technology.

Today, an entry level UPS for a single PC and printer can be had for around Rs.5,000, batteries for about 15 minutes backup, included. Bigger systems could cost you nearer Rs.1 lakh. You buy what you need.

Here's to 'powerful' computing!

Courtesy : The Hindu

This programme, partially assisted by NORAD aims to improve the lives of poor women by training them in traditional and non-traditional trades viz. electronics, watch assembly, basic and advanced computer training, garment making, secretarial practice, embroidery etc. and to ensure their employment in these areas.

Objective

To train women, preferably in the non-traditional areas and to ensure their employment.

Implementing Agencies

The scheme is implemented by Public Sector Undertakings/Corporations/Women's Development Centres of Universities and Voluntary Organisations registered under Societies Registration Act, 1860 or corresponding State Act.

Target Group/Beneficiaries

Poor and needy women in urban slums and rural areas and women from weaker sections such as Scheduled Castes and Scheduled Tribes.

Pattern of Assistance

Under the scheme financial assistance would cover

- ★ Construction of shed for training-cum-production purpose if required
- ★ Training Cost
- ★ Stipend to the trainees and attendance performance incentive wherever eligible
- ★ Training kit necessary for training-cum-production.
- ★ Dormitory facilities for the working women, if required

SETTING UP OF EMPLOYMENT-CUM-INCOME GENERATING UNITS FOR WOMEN (NORAD)

- ★ Seed money as initial working capital, if required
- ★ Day care centre
- ★ Management training
- ★ Pre-production activities such as feasibility studies and cost-project activities where necessary
- ★ Stipend @ Rs.250 p.m. per beneficiary
- ★ Cost ceiling is Rs.8000 per beneficiary

Eligibility Conditions

The Organisations should have atleast three years experience in the field after registration. They should be working for the development and empowerment of women. Institution and public



sector organisation should have expertise in the area of training being undertaken. Projects are appraised after recommendation at state level and put up to a Project sanctioning committee within the Central Social Welfare Board or the Department.

Voluntary organisations are expected to maintain close followup of the trained women to ensure their gainful employment post-training.

Procedure for Applying

The proposal in the prescribed format, through the State Government Department dealing with Women & Child Development or State Women Development Corporations should be sent to

**The Deputy Secretary (NORAD)
Department of Women & Child Development
1st Floor, Jeevandeep Building,
Sansad Marg, New Delhi - 110 001
Tel : 011-3362519, Fax : 011-3348521**

Alternatively, a proposal from an NGO can be routed through State Social Welfare Advisory Boards to Central Social Welfare Board which may be addressed to :

**The Executive Director
Central Social Welfare Board
Samaj Kalyan Bhawan
B-12, Tara Crescent,
Qutub Institutional Area
New Delhi - 110 016
Tel : 6865474, 6960059, 6960061
Fax : 6960057**

Documents to be enclosed along with the application

As at VI of the application form.

Application Form

Setting up of Employment-cum-Income Generating Units for Women (NORAD)

I. Details regarding implementing agency

- 1. Application Number
- 2. Date of application
- 3. Organisation name

- 4. Organisation type (NGO/Public Sector)
- 5. Organisation Address
- 6. City/Town/Village
- 7. Pincode
- 8. Tehsil/Block/Taluka
- 9. District
- 10. State/Union Territory
- 11. Telephone No.with STD Code
- 12. Fax No.(If any)
- 13. E-mail Address (If any)
- 14. Contact Person
- 15. Date of Registration
- 16. Objective of Organisation

(Whether women's development / welfare is stated as said objective)

17. Statement of audited A/cs	Year-1	Year-2	Year-3
(i) Receipts and payment
(ii) Assets and Liabilities
(iii) Income and Expenditure
(iv) Whether (Surplus/Deficit)	S/D	S/D	₹/D
(Supporting documents).....

18. Organisation experience (Experience in the field viz. women and child development and income generating activities, number of years experience, annual report and any other supporting documents)

.....

.....

19. Remarks (whether organisation already receiving / received grants under the NORAD assisted scheme or any other schemes of this Department or Central Social Welfare Board or any other Government / State Government, If so, whether completed the project successfully, as per requirement)

.....

.....



II. Project Details

20. Name of Trade
21. Sub-Trade
22. Trade type
(Tradition/Non-traditional)
23. No. of beneficiaries
24. Background of trainees selected (Mention whether SC/ST, Rural, Other Backward classes, etc.)
25. Source of raw material
26. Location of project
City/Town/Village
- Tehsil/Block/Taluka
- District
27. Whether District Headquarter,
Industrial Town, Village, other
28. Population and Location
of Village Town/City where
project is to be located
(1991 census)
29. Is it a continuation project? (Y/N, if 'Y' should be supported by employment status of trainees of earlier sanctioned project along with utilisation certificate for second instalment and audited statement of expenditure for the grants released)
-
-
30. Duration of training year....month....Day.....

**III. Cost of Project
Non-recurring**

31. Training / Equipment cost (Rs.)
32. Furniture and fixtures (Rs.)
33. Others (Rs.)
- Total (Non-recurring)(Rs.)

Recurring

34. Salary of Instructor/Trainers(Rs.)
35. Stipend amount (to trainees which normally should not exceed Rs.250 per month if organisation proposes to give more than this amount the excess amount will be borne by the organisation out of its own resources)
-
36. Raw material for training (Rs.)
- (Raw material will ordinarily be provided for half of the duration of training only)
37. Rent (Rs.)
38. Other Expenditure (Rs.)
39. Contingency amount (should not exceed 5 percent of the total recurring cost and it should cover the expenses like electricity, water, loading of furniture and fitting expenses etc.)
- Total (Recurring) (Rs.)
- Grand Total (Rs.)
- (Non-recurring+recurring)

IV. Per Capita Cost

V. Other Details

40. Whether organisation will form the trainees, into self help group/society/cooperative for production activity after completion of training?

41. Whether organisation has obtained willingness of local administration / financial institution to assist the beneficiaries after training to acquire assets for income generation under IRDP/SC/ST...Corpn/bank finance etc? (Yes/ No)

(If yes supporting documents to be furnished)

42. Employment potential of the training programme (should be supported by documentary proof for employment linkages/marketing tie-ups arranged by the NGO for the women to be trained under the project for getting sustained employment immediately after completion of training)

43. Whether organisation will keep record of trainees and regularly obtain employment status/earning (Yes/No)

44. Whether organisation prepared to continue the project with recurring cost only for subsequent batches (Yes/No)

VI. Documents to be enclosed (Indicate whether enclosed or not)

- (i) Copy of registration Certificate (Yes/No)
- (ii) Memorandum & Bye-Law of Organisation (Yes/No)
- (iii) Audited Statement of accounts of the organisation (last 3 years) (Yes/No)

- (iv) Proof of sustained employment (Yes/No)
- (v) Proof of linkages for acquisition of assets by beneficiaries
- (vi) List of executive members (indicating address and occupation) (Yes/No)
- (vii) Number of male members
- (viii) Number of female members
- (ix) Female member status (should be atleast 1/3rd)
- (x) Last Annual Report (Yes/No)
- (xi) State Govt./Women Department recommendation (Yes/No)
- (xii) Project cost estimates (Yes/No)



In case of a continuation project the following additional documents are required

- (i) Employment status of trainees of earlier project/batch (Yes/No)
- (ii) Utilisation Certificate certified by CA of the amount sanctioned in earlier project (Yes/No)
- (iii) Statement of expenditure certified by CA incurred by the organisation out of the amount sanctioned in earlier project (Yes/No)

*Courtesy : Schemes for Assistance - A Hand book
Department of Women and Child Development
Ministry of Human Resource Development
Government of India ★*

Decentralised Planning at District level through involvement of local level representative institutions such as Panchayat Raj Institutions, Co-operatives, Producers/Farmers organisations, non-governmental organisations in the formulation of development schemes as well as their implementation has been advocated mainly on the following considerations :

1. Effective and timely tackling of local problems and removal of regional disparities in development;
2. Efficient utilisation of resources;
3. Ensuring an equitable distribution of the benefits of developments;
4. Integrated area development through a high degree of co-ordination among development agencies at the horizontal level.
5. Providing opportunities for people's participation in the planning process.

Scope of the District Plan :

District Planning is a kind of area based planning with a more detailed assessment of the resources, problems and potentialities of the district so that investment programme and welfare oriented schemes which are well suited to the particular needs of the district could be evolved. Ideally, district planning should cover all aspects of socio-economic life of the people living in the district. As we are introducing planning concept in the midst of a development process we have to define clearly the scope of district planning and delineate the specific subjects of district planning. A practical point of view is that we may have to restrict the planning to activities.

Methodology :

Though the ultimate objective is to prepare comprehensive district plan, our immediate concern is to confine to the district sectors and to the financial limit indicated. As the first step the DRDA may prepare a comprehensive district profile covering vital aspect of the district economy and giving an account of the on-going development schemes in various sectors. Secondly data and information available with DRDA lead bank. Statistics department, sectoral reports etc. may be utilised for the preparation of the profile. An

DECENTRALISED DISTRICT PLANNING - METHODOLOGY AND SCOPE

K.V. PALANIDURAI,

Full Time Member, State Planning Commission

analysis of the ongoing development schemes in the district with particular reference to the potentials and problems would help us to identify the gaps and the problem areas that remain to be tackled. This analysis and the district profile will form the background for the preparation of district plan.

The DRDA could then present the profile, the analysis as well as the salient features of the decentralised district plan, to the District Development Council for discussion. The Chairman of the DDC may explain the objectives of the decentralised district plan, invite suggestions and recommendations from the members, particularly from non-official members - MLAs and MPs. The next phase is to consolidate the proposals/suggestions emanating from the members of the DDC and examine them from the feasibility point of view. The Collector and the DRDA might have received representations from the public for provision of basic amenities or for implementation of development schemes, such as minor irrigation work etc. These could also be considered while formulating the District Plan. The DRDA may consult the line department while scrutinising the proposals. After careful consideration of all the proposals the DRDA has to select schemes conforming to the district sector concept and present them to DDC for approval. It must, however be ensured that at the final stage of approval, financial limit is kept within the allocation for the district. The Collector can decide on the manner of implementation and the agency - the line department or the Panchayat union/DRDA or Non-governmental organisation. As the Collector has been authorised to sanction the schemes and operate the budget head "Decentralised District Plan" the scheme could be implemented expeditiously.

The above methodology is too simplistic and has been suggested to make a beginning in decentralisation of planning process. Further, limited staff available for district planning work, modest allocation of resources are some of the factors which were taken to consideration while formulating the methodology. It would however, be necessary to initiate steps for preparation of a comprehensive district plan. This will no doubt take a long time and may require considerable strengthening of DRDA. The following steps are suggested for preparation of comprehensive district plan.

1. Formulation of the major objectives of the district plan.
2. Compilation of data for district planning.
3. Bringing out the profile of the district in relation to the basic objectives.
4. Formulating the main strategy and thrust of district planning.
5. Analysis of the existing programme and projects with reference to the strategy outlined above and proposals regarding.
 - (a) Modification of the ongoing programmes and projects.
 - (b) Proposals for removal of inter-block disparities
 - (c) Assessment of unemployment/ underemployment and proposals for manpower planning and budgeting
 - (d) Inclusion of new projects and plans
 - (e) Interlinkages between various projects and programmes
 - (f) Organisation and management to ensure that no implementation gap exists.
- (6) Assessment of resources for allocation to various programmes and projects.
- (7) A statement of physical and financial components of the district plan.
- (8) Statement of spatial dimension of the district plan
- (9) Relationship and links between the district plan and regional and State development plans.

The DRDA must equip itself with training personnel to take up district planning work on the above lines. In other words, the DRDA should function as planning authority also. The following would be planning functions of DRDA:

- (i) Crystallisation of local needs and objectives within the broad frame work of national and State level objectives;
- (ii) taking stock of the natural and human endowments of the district and the regions within the district as well as the level and pattern of development attained so far;
- (iii) listing and mapping of amenities at the village, block and district levels;
- (iv) formulation of district plans in their Socio-economic temporal and spatial dimensions along with their linkages with the rest of the economy;
- (v) formulation of policies, programmes and priorities relevant for the district;
- (vi) co-ordinate implementation of the district plan;
- (vii) monitoring and review of implementation of district plan programmes with due regard to their linkages and dependencies;

The Report of Working Group on district planning (Constituted by the Planning Commission, Government of India) has recommended a "Stages approach" for district planning. The first stage is called the "initiation stage" and during this period the State should establish the pre-requisite such as defining the scope of the district planning, strengthening the capability of district planning, introduction of the concept of United Fund, etc. During the second stage "limit decentralisation" will be attempted by granting extensive delegation of powers at the district level and streamlining of the procedures. The Third and final stage would cover enlargement of district sector activities and conferment of decision making powers to district bodies with high level of popular participation and adoption of budgetary practices that will encourage local initiative. It may be mentioned that Tamil Nadu has entered the first stage with the launching of decentralised district planning. The broad contours of an idea decentralisation process has been outlined above and it is essential that the State must take sustained efforts to make decentralised planning a success. The recent Constitutional Amendment relating to Panchayat Raj Institutions has paved the way for moving ahead. The Panchayat Raj Act envisages the key role for democratically elected Panchayats at the district and block levels. The Act also provides for devolution of powers and resources to the Panchayats at various levels for undertaking planning.

ANGER

Most Destructive Force on Earth

- Dr. U.S.Iyer

Anger is "the feeling one has towards someone or something that hurts, opposes, offends or annoys" resulting in strong displeasure.

It is the most destructive force making the atmosphere a dreadful hell. It is an important instigator of aggression. Frustration is an offshoot of anger.

Short temper, therefore, is nothing short of temporary insanity. Impetuosity takes over from rational thinking and logical decisions are distorted. During the "historic" period of anger, the casualty is happiness, for the one who is affected directly and all others involved indirectly.

Racket anger is emotional disaster. It dissipates one's energy and affects the nervous system, giving way for even cardiac arrests, consequent to hypertension. It comes often, suddenly and often we give life to it.

A short-tempered man loses self respect, humility, compassion and even mental equilibrium.

Maxwell Maltz, a famous psychologist, says: "Anger is frustration, an explosive kind of frustration in which you turn a passive feeling of hurt into an active performance of willful destruction."

The following are some of the interesting factors accompanying the monstrous disease called racket anger.

1. When a person is angry, he gets tremendous strength - destructive strength. The individual will not even hesitate to murder somebody who goes against his/her wishes. It is aspernicious as temporary madness. Even in the Indian Penal Code, a murder committed in a fit of rage gets some leniency when the punishment is awarded. The murderer acts with emotion, devoid of reasoning power.

2. Paroxysm of rage causes death-like silence on the person at the receiving end. People known for short temper are generally kept at a safe distance.

3. Monotony causes anger. People manning the 'May I Help you' counters at railway stations, airports and bus stations are victims of this form of anger. They are bombarded with the same question by several hundred people every day. For the general public the subject is important whereas for these employees it is nothing but monotony. This problem can be solved if the job is taken up on a rotation basis with each individual working for not more than three hours.

4. Researchers have propounded a very interesting theory that many cancer patients have a history of anger, grief, hostility and aggression. It is, however, logical that all short-tempered people need not end up with cancer, but naturally a majority of the cancer patients would have been victims of racket anger. This, ofcourse, is a subject for debate and more exhaustive study.

5. Very often an angry person become furious at himself when he comes back to his normal senses. "It could have been done without" is the usual feeling, but unfortunately maximum damage would have been done before the individual feels sorry for the abnormal behaviour.

6. Many of us do not accept the prophetic warning. "When you are right you can afford to be cool; when you are wrong you have to be cool." The greatest tragedy is that once we realise that we are wrong we do not forget it. We store it in our sub-conscious mind and wait for an opportunity to revive it. We give life to it when we get a chance. Eric Berne in his book *what Do you say after you say Hello* says rightly that most of us play the game - IGYSOB. This is a game where we give life to a hurt feeling over an issue which is already

closed and buried, except the person bent upon reopening it.

7. In an atmosphere charged with exasperation, humans close all channels of communication. Available modes are used to convey hostile feelings. Friendship becomes a mockery of human relationship, for getting that its value is realised only when a friend is lost.

8. Dr. George Mark of USA conducted an interesting survey to find out that in a situation of melancholy and emotional distress, women use their brains 10 times more than their male counterparts. They look calm and composed but inwardly they are highly agitated and upset. They retract their behaviour quicker than men, wonder fully averting an emotional calamity.

9. Not to get anger is impossible. One should be in a position to resist an inhuman holocaust. Control is different from repression. Cardiologists argue that if anger is suppressed then it may result in heart attack. So to avoid heart attack, anger should be given vent in a constructive way.

The following measures can control anger

- The human brain receives a message in advance that a fury is on its way. Immediately leave the place or change the topic and avoid the person provoking indignation.
- Abraham Lincoln is a classic case of expression of wrath, its control and avoidance of repression. When he died, a bunch of letters firing his officers were found underneath his pillow. Whenever he lost his cool, he would immediately vent his anger by writing a nasty letter, but would not issue them. They were all safely preserved for posterity.
- Look at the mirror when you are bridled up. Just watch how worked up and ugly you look.
- It is meaningless to have external cool with internal burning. One should forget and forgive. It is not a war where one would win or lose.
- Avoid certain food habits, alcohol and sedatives. These are causations of towering rage.



Frant S. Caprio and Joseph R. Berger in their well researched book "Help Yourself with Self Hypnosis" suggest the following measures to combat anger.

"I should feel that people can make me angry if I let them allow. To become angry is to flatter the other persons. I am going to think with my mind and not with my emotions."

When two persons are angry simultaneously there can be a volcanic eruption. This is precisely what should be averted. Avenues to creative processes of synergy are closed when the atmosphere is charged with this devastating process.

Text 63 of Bhagawad Gita is quite relevant here :

"From anger complete delusion arises, and from delusion bewilderment of memory: when memory is bewildered, intelligence is lost and when intelligence is lost one falls down again into the material pool".

Courtesy : *The Science Express*





THIRUKKURAL

The Code of Conduct for the mankind

எப்பொருள் யார்யார்வாய்க் கேட்பினு மப்பொருண்
மெய்ப்பொருள் காண்ப தறிவு.

**eporul yaryarvai ketpinu maporun
meiporul kanba dharivu.**

'Whatever information is brought by whatever person must be carefully sifted for discovering what is true. The faculty that enables a person to do this test is reason.'

COMMENTARY

Human nature is diverse. Sometimes valuable information may be obtained through bad men. Sometimes good men may bring in useless and unreliable information. Even through the enemies' mouth real and valuable facts can be learnt while friends may misguide and direct you towards evil. Hence it is indispensable before taking action to submit all such information to the rigorous test of reason.

★ ★ ★

எண்பொருள வாகச் செலச்சொல்லித் தாபிறர்வாய்
நுண்பொருள் காண்ப தறிவு.

**enborula vaha jelajolli thanbirarvai
nunborul kanba dharivu.**

'Even when you make a statement about difficult points your statement must be couched in clear language easily intelligible to the listener. When another person makes a statement you must accept it with caution and discover the subtle truth contained therein. What enables you to do both these functions is again reason.'

★ ★ ★

உலகந் தழீஇய தொட்ப மலர்தலுங்
கூம்பலு மில்ல தறிவு.

**ulahan dhariya dhotpa malardhalun
gunbalu milla dharivu.**

'It is reason that secures for a person the friendship of the wise. It is reason again that preserves this friendship as a constant factor avoiding its blossoming in the beginning and shrinking at the end.'

COMMENTARY

It is reason that enables you to choose your friends. Friendship so chosen with the help of reason is not like hasty friendship which begins with an appearance of sincerity which gradually fades away. The author applies the metaphor of a flower which appears in full blossom at the beginning and shrinks towards the day's end. This is the peculiar characteristic of the flowers of water-plants like the lotus in a tank. Friendship unlike the flower in a tank which begins the day with a blossom and ends the day with its shrinking, is like the flower in a tree which when once it blossoms keeps on without shrinking. Since such a constant friendship would necessarily yield happiness to the person concerned, acquiring such a friendship is the result of reason. Such a friendship with the wise men is quite different from the friendship acquired with the ordinary common men which grows in intensity when you are rich and which fades away when you become poor.

★ ★ ★

எவ்வ துறைவ துலக முலகத்தோ
டவ்வ துறைவ தறிவு.

**evva dhuraiva dhulaha mulahatho
davva dhuraiva dharivu**

'It is reason that enables a ruler to carefully study the ideals and aspirations of his people and to adjust his own life accordingly.'

COMMENTARY

A ruler of a country cannot go contrary to the ideals of his people. If he adopts an attitude of indifference and irresponsibility as regards the aims of his people, there is sure to be a conflict. He cannot afford to have

the conceit that he is above law, since all laws proceed from him. If a ruler adopts such an attitude of self-conceit and irresponsibility he will be adopting a course of life which would be morally condemned and which is sure to bring disgrace on him. Hence even a sovereign ruler is bound to accept the law of the State and try to maintain peace and harmony, in order to promote the happiness of his subjects. It is reason again that would guide him towards this right course.

★ ★ ★

அறிவுடைய ராவ தறிவா ரறிவிலா
ரஃதறி கல்வா தவர்.

**arivudaiya rava dhariva rarivila
rahdhari kalla thavar.**

'It is reason that enables a person to have a foresight of events. One without reason cannot have such a foresight.'

COMMENTARY

Foresight in this case implies a careful examination of the existing conditions and a correct inference as to the future. This is possible only with reason. One without reason has to gain wisdom only after the event.

★ ★ ★

அஞ்சுவ தஞ்சாமை பேதைமை யஞ்சுவ
தஞ்ச லறிவார் தொழில்.

**anjuva dhanjamai pedhaimai yanjuva
dhanja larivar thozil**

'It is folly not to be afraid of what ought to be dreaded. To shun the dreadful is the behaviour of those that have reason as their guide.'

COMMENTARY

Sin, disgrace, ruin, etc. are things that are to be dreaded. Fearing these means directing one's conduct in such a way as to avoid any such evil result. Not fearing these means foolhardy conduct thoughtlessly pursued right towards such evil end. It is reason again that guides one's conduct towards good and away from evil.

★ ★ ★

எதிரதாக்க காக்கு மறிவினார்க் கில்லை
யதிர வருவதோர் நோய்.

**edhiradha kaku marivinar killai
yadhira varuvadhori noi.**

'Those who guided by reason carefully protect themselves with foresight will not run in future any fearful danger.'

★ ★ ★

அறிவுடைய ரெல்லா முடையா ரறிவிலா
ரென்னுடைய ரேனு மிலர்.

**arivudaiya rella mudaiya rarivila
rennudiya renu milar.**

'A person equipped with reason even though lacking in all the elements that make up prosperity will be considered to have all of them intact; whereas a person without reason even though he has them in plenty will be considered to be in want.'

COMMENTARY

It is clearly pointed out that reason is the main factor in acquiring and preserving wealth and prosperity. Without this reason if a person is lucky enough to inherit enormous prosperity and wealth, the whole of it will disappear because of the lack of guidance available from reason. Hence reason is the main foundation on which the prosperity whether of the individual or of the State rests.

★ ★ ★

செருக்குஞ் சினமுஞ் சிறுமையு மில்லார்
பெருக்கம் பெருமித நீர்த்து.

**serukun jinamun jirumaiyu millar
perukam perumidha nirthu.**

'A king who is free from arrogance, wrath, and lust will have his greatness increasing evermore.'

★ ★ ★

வருமுன்னர்க் தாவாதான் வாழ்க்கை யெரிமுன்னர்
வைத்தாறு போலக் கெடும்.

**varumunnar kavadhan vazkai yerimunnar
vaithuru pola kedum.**

'If a prince does not ward off evil before its occurrence, with fore-thought, his life will be as precarious as a haystack near a fire.'

COMMENTARY

A heap of straw near a fire is sure to be burnt to ashes. Similarly, the reign of a prince who is careless and who is incapable of preventing future evil, since he is lacking in forethought will come to ruin surely. ★

NALADIYAR

இவ்வாழ்க்கைக்கு வேண்டுவனவற்றையே
செய்து அறஞ்செய்யாமை அறிவின்பை

பெருங்கடல் ஆடிய சென்றார் - 'ஒருங்குடன்
ஓசை அவிந்தபின் னாடுகும்' - என்றற்றால்,
'இற்தசெய் குறைவினை நீக்கி அறவினை
மற்றறிவாம்' - என்றிருப்பார் மாண்பு.

Postponing virtuous action to a time
that never arrives.

They went to bathe in the great sea, but cried,
'we will wait till all its roar is hushed, then bathe!'
Such is their worth who say, 'we will get rid of all
our household toils and cares and then we will
practise virtue and be wise'.

★ ★ ★

குலம் முதலியவை ஒருவனுக்கமைந்தும்
உலகநடை அறியாதிருப்பது
சாரமற்றபால் சோறு போல் ஆகும்.

குலந்தவங் கல்வி குடிமைமூழ் பைந்தும்
விலங்காமல் எய்தியக் கண்ணனும் - நலஞ்சான்ற
மையறு தொல்சீர் உலகம் அறியாமை
நெய்யிலாப் பாற்சேற்றி னேர்.

A high tone of manners and morals

Though a man be of good caste, have
performed deeds of ascetic virtue, acquired
learning, is of good family, and attained a ripe old
age, so that in these five points he is faultless;
yet his ignorance of what is thoroughly good,
without stain, sanctioned by ancient precedent,
and of good renown in the world's ways, will render
all his advantages like thin, watery milk with boiled
rice.

★ ★ ★

அறிவிலார் வீணாள் கழிப்பார்

நல்லவை நாடொறும் எய்தார்; அறஞ்செய்யார்;
இல்லாதார்க் கியாதொன்றும் ஈகலார்;-எல்லாம்

இனியார்தோள் சேரார்; இசைபட வாழார்;
முனியார்கொ நாம்பவாழ் நாள்?

Fools make all life sad for themselves.

No good each day they gain; nor deed of virtue
do; nothing to needy men impart; nor know they
joy of loved ones' sweet embrace; devoid of fame
they live: do such not loathe the days they live?

★ ★ ★

பேதையர் நட்புப்பெரும் பயனைத்
தருவதாயினும் கொடிது.

விகழைந்தொருவர் தம்மை வியப்ப ஒருவல்
விகழைந்திலேம் என்றிருக்குங் கேண்மை, -

தழங்குகுழல்

பாய்திரைகுழ் வையம் பயப்பினும், இன்னாதே
ஆய்நலம் இல்லாதார் மாட்டு.

Friendship without reciprocity

Friendship with those who are destitute of
exquisite goodness, and who, though you cultivate
them with affectionate deference, (morosely) say
'we entertain affection for none, - though it should
yield as its fruit the earth, which the sea with its
noisy chime of leaping billows girds around, -
would be only affliction!

★ ★ ★

ஒருவன் தன்புகழைத்தானே எடுத்துக் கூறுவது
அறிவில்லாமை

கற்றனவுங் கண்ணகன்ற சாயலும் இற்பிறப்பும்
பக்கத்தார் பாராட்டப் பாடெய்தந், தானுரைப்பின்
மைத்துணர் பல்கி மருந்திற் றணியாத
பித்தன்என் றெள்எப் படும்.

Self-laudation.

The learning a man has acquired, his world-
renowned excellence, and his nobility of birth, will
gain for him respect when the bystanders
celebrate them; but if he himself proclaim them,
the young kinsmen crowding around will deride him
as one afflicted with a mania not to be mitigated
by any medicine.

★ ★ ★

Any Festival... Any season...
Any time...

Co-optex



Co-optex ranges:

- Cotton, Silk, Polyester and Blends
- Sarees ● Dress Material ● Suitings
- Shirtings ● Lungis, Towels, Dhotis
- Furnishings, Bedsheets


Co-optex
TAMILNADU HANDLOOMS

● Visit your nearest Co-optex Showroom.

